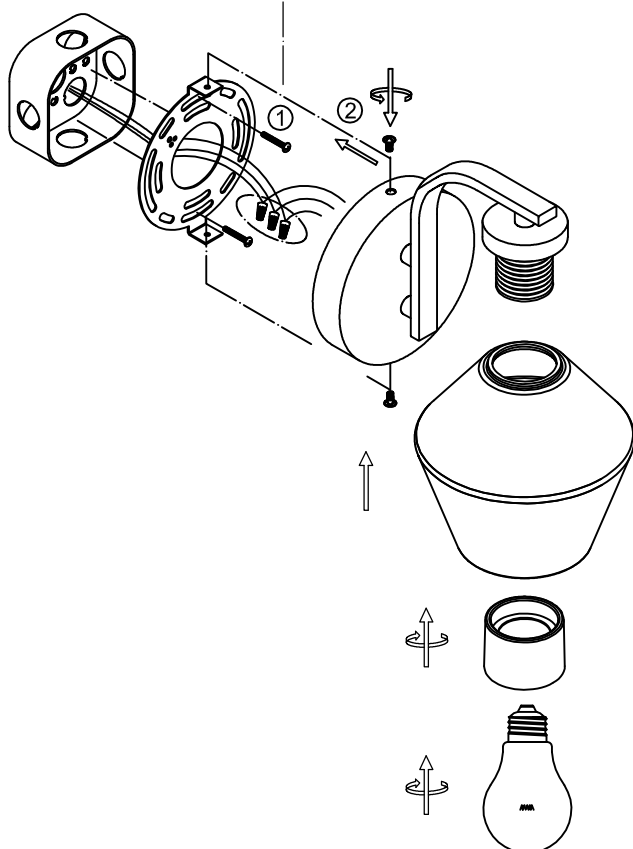
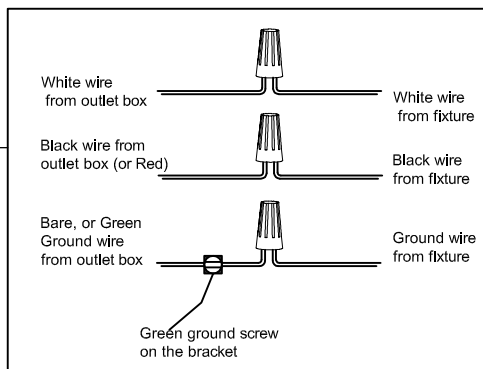


# INSTRUCTION MANUAL

- 1. Always ensure the power is completely OFF before any installation or maintenance.**
- 2. The fixture must be installed by a qualified licensed electrician**



**1. Ensure main supply is switched off.**

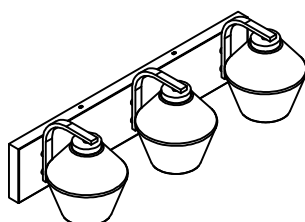
**2. Have the mounting screw (1) through the mounting bracket and screw into octagon box.**

**3. Connect the wires using wire nuts, tight mounting bracket and back plate using screws (2).**

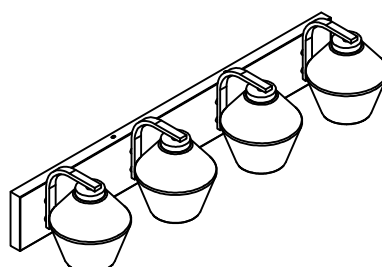
**4. Put the glass shade to the socket cup and tighten with socket ring. Install the light bulb (not provided) to the socket.**



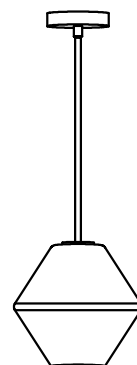
**WS3069-1BK (BLACK)**  
**WS3069-1AB (AGED BRASS)**



**VL3069-3BK (BLACK)**  
**VL3069-3AB (AGED BRASS)**



**VL3069-4BK (BLACK)**  
**VL3069-4AB (AGED BRASS)**



**P3069-1BK (BLACK)**  
**P3069-1AB (AGED BRASS)**